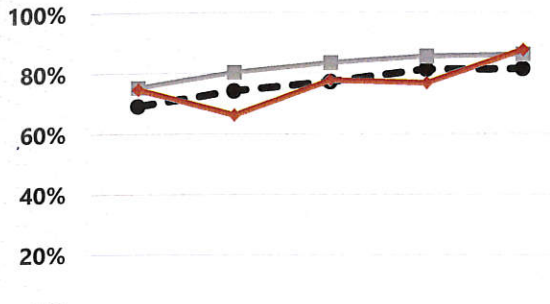


i) % Achieving Phonics Threshold Year 1

School	Comparisons		
	LA	England	Sch 2016
88%	86% ↑	81% ↑	77% ↑
56 pupils			



	2013	2014	2015	2016	2017
Eng	69%	74%	77%	81%	81%
LA	75%	80%	83%	85%	86%
Sch	75%	66%	78%	77%	88%

● Eng ■ LA ◆ Sch

ii) % Achieving Phonics Threshold Year 2

School	Comparisons		
	LA	England	Sch 2016
57%	65% ↓	62% ↓	92% ↓
14 pupils			

*Disapplied pupils are given a score of 0

iii) Vulnerable Groups Analysis - Year 1 Phonics Total Points Score

